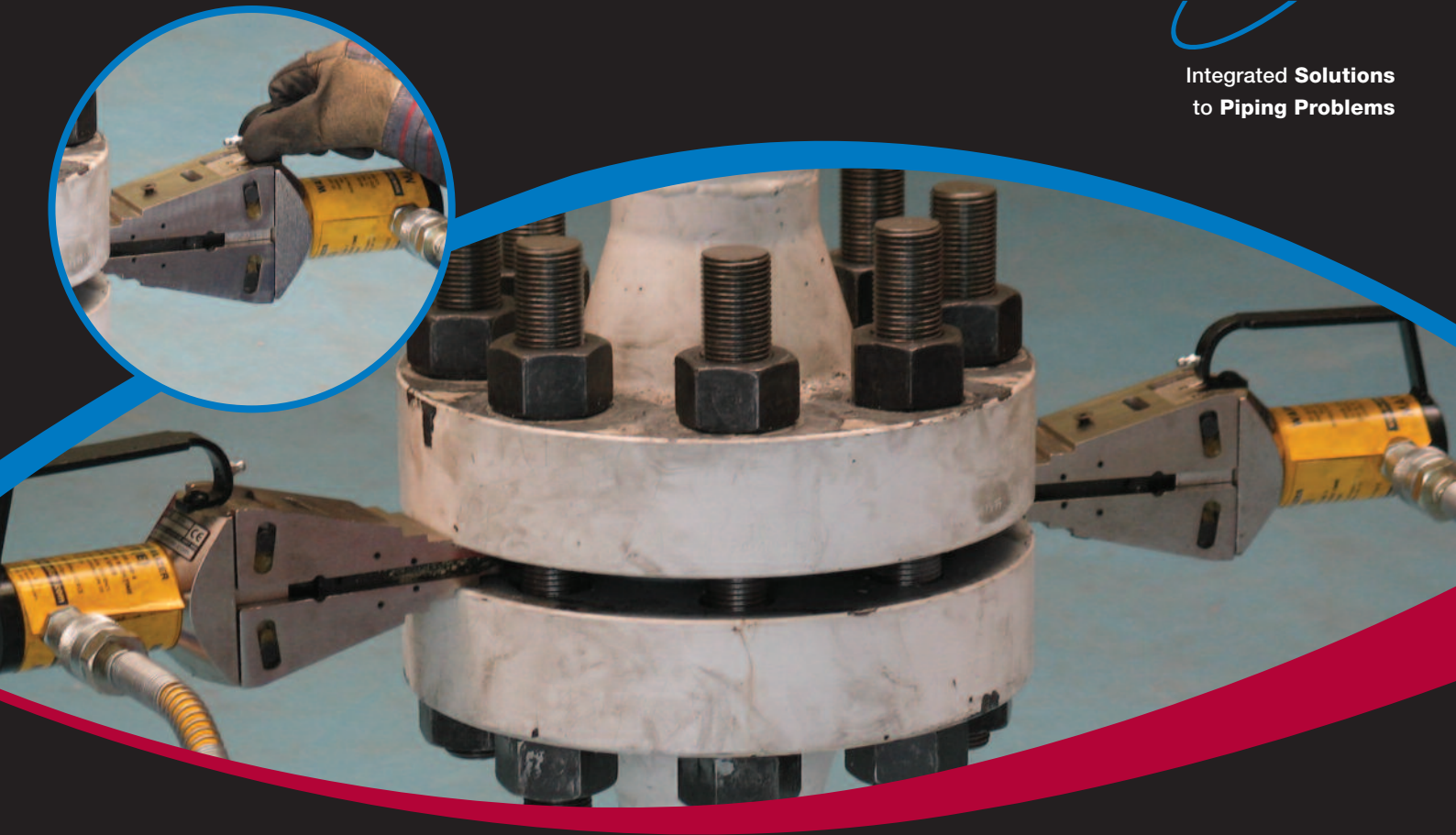


Flange Spreader



Integrated Solutions
to Piping Problems



FLANGE SPREADER DATA

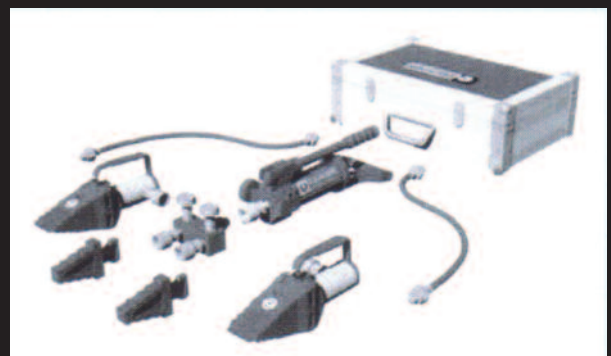
SPREADING FORCE = 14.5T (145 kN)

It is recommended that tools are used in pairs giving $2 \times 14.5 = 29$ T (290 kN)

TOOL WEIGHT = 7kg (15.4 lbs)

KIT COMPONENTS

- 2 x Wedgeheads
- 2 x 10,000 psi (700 bar) Hydraulic Hoses, 2 m (78.75") each
- 2 x 10,000 psi (700 bar) Hydraulic Cylinders
- 1 x 10,000 psi (700 bar) Hydraulic Single Port Sealed Hand Pump
- 1 x 10,000 psi (700 bar) Twin Valve Manifold
- 2 x Safety Blocks
- 1 x Instruction Manual
- 1 x Robust Carry Case with Protective Foam Inserts



WEIGHTS AND DIMENSIONS

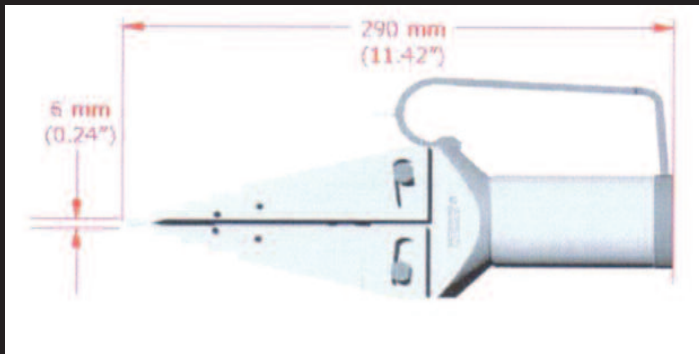
- Tool with Hydraulic Cylinder = 7 kg (15.4 lb)
- Safety Block = 0.5 kg (1.1 lb)
- Hand Pump = 2.5 kg (5.5 lb)
- Hydraulic Hose = 1.0 kg (2.2 lb)
- Carry Case with Foam Inserts = 5.0 kg (11.02 lb)
- GROSS WEIGHT = 27 kg (59.5 lb)
- Carry Case Dimensions 550 x 390 x 180 mm (21.65" x 15.35" x 7.09")

Flange Spreader

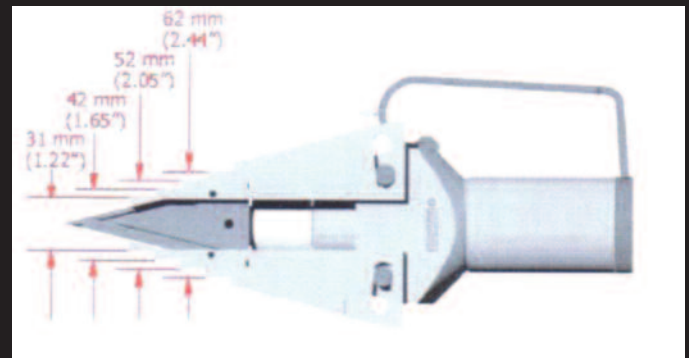
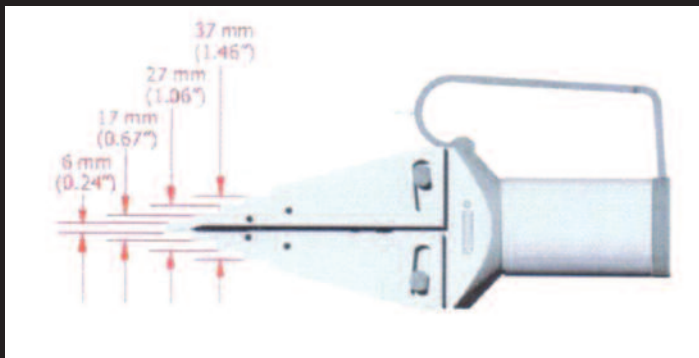
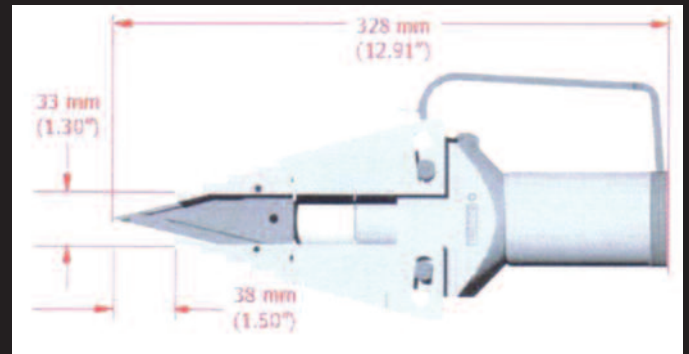


Integrated Solutions
to Piping Problems

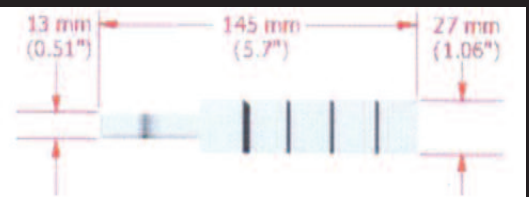
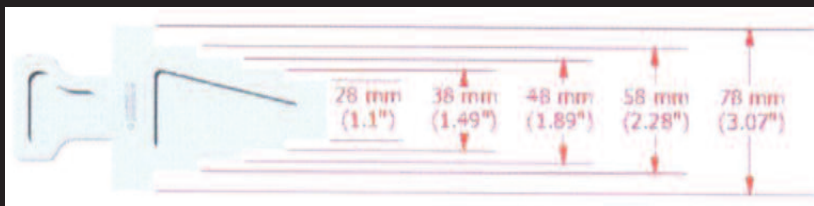
TOOL DIMENSION - CLOSED



TOOL DIMENSIONS- OPEN



SAFETY BLOCK DIMENSIONS



RANGE OF APPLICATION

All ranges with a minimum access gap of 6 mm (0.24')

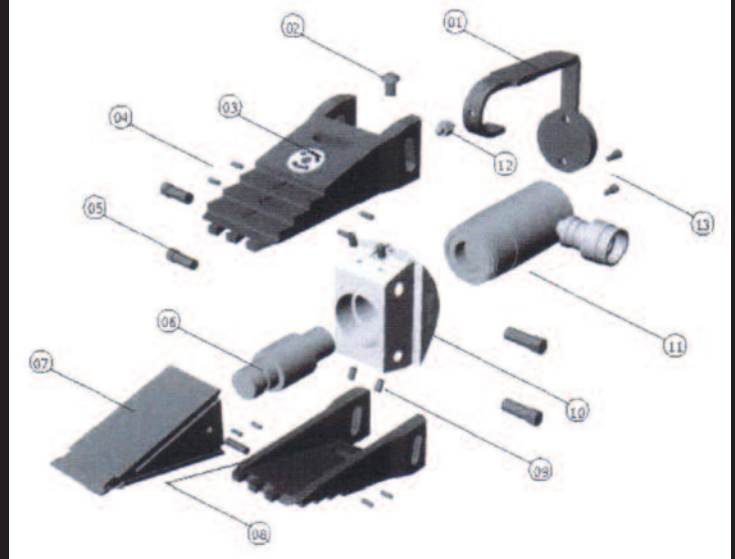
Flange Spreader



Integrated Solutions
to Piping Problems

PARTS LIST AND EXPLODED DRAWING

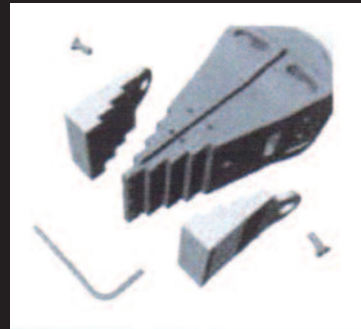
ITEM	DESCRIPTION	QUANTITY
01	Handle	01 each
02	Retaining Screw for Handle	01 each
03	Jaws	01 set of 2
04	Roll Pins	01 set of 8
05	Slide Pins	01 set of 4
06	Connector/Push Rod	01 each
07	Wedge	01 each
08	Grub Screw	01 each
09	Grab Screw	01 set of 4
10	Body	01 each
11	Hydraulic Cylinder	01 each
12	Grease Nipple	01 each
13	Base Screw for Handle	01 set of 2
14	Cylinder Repair Kit (Not illustrated)	01 kit



STEPPED BLOCK KIT (Available as an option)

KIT COMPONENTS

- 2 x Stepped Blocks
- 2 x M6 x 10mm Countersunk Screws
- 1 x 4mm Hex Key



WEIGHTS AND DIMENSIONS

- Stepped Block = 0.52kg (1.14 lb)
- GROSS WEIGHT = 1.5kg (3.5 lb)

