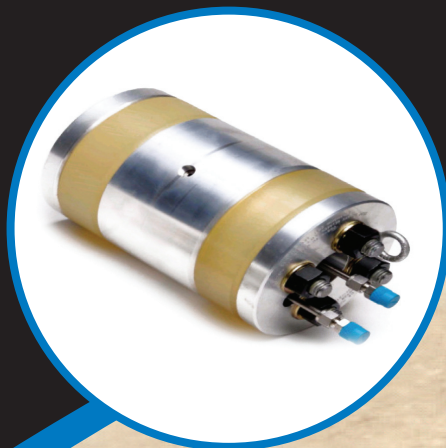


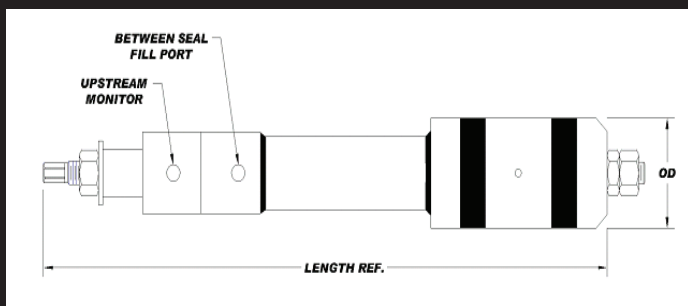
# Double Block and Bleed



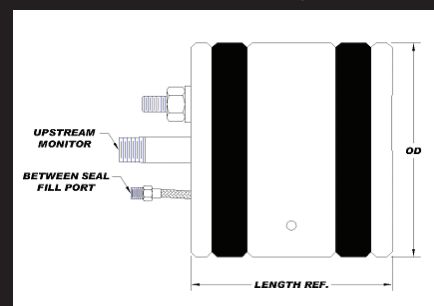
Integrated Solutions  
to Piping Problems



## 3/4" thru 3" design



## 4" thru 24" design



**Aluminum / Steel Construction • 1.5 : 1 Safety factor • Reduces NDE  
Use less than a gallon of water, reducing waste and treatment expense.**

Positively isolate explosive vapors from hot work areas when performing modifications and repairs.

The Double Block and Bleed (DBB) plug revolutionizes Isolation and testing of pipe connections. The DBB plug allows an operator to positively isolate and monitor potentially explosive vapors during "hot work" , then effectively hydrotest the new weld connection.

**With one easy to use tool !!**

### How it works

After determining pipe and schedule size. Install DBB upstream of "hot work" area.

Expand seals by tightening compression nut(s).

Inject inert gas or water between seals (isolation zone) and pressurize.

[www.patriot-int.com](http://www.patriot-int.com)

